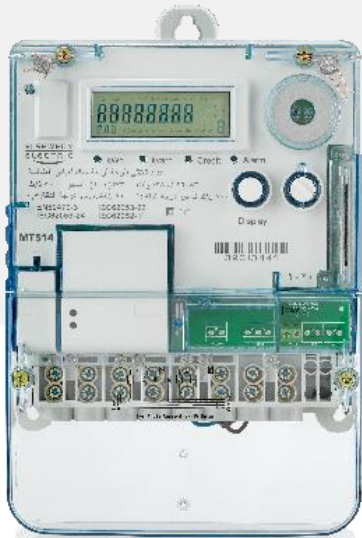


# MT514

## Prepaid Three-Phase Meter.



Iskraemeco's MT514 is a new type of 3 phases 4 wires CPU card prepaid electronic energy meter, which developed and produced by Iskraemeco for residential, commercial, and industrial customers. It is designed, manufactured, test under the requirements of IEC62053-21, EN50470-3 CLASS C, IEC62056-21(IEC61107) and other relevant international standards.

## Features

- Active, reactive energy measurement
- Adopt logic encryption card realizing two-way data transmission, support remote charge.
- Support step tariff, maximum 9 steps 10 tariff or TOU tariff maximum 8 tariffs
- Offset when consumption pass several grades.
- Support prepayment mode and postpaid mode
- Different time different MPL (maximum power limit)
- Over MPL alarm and trip. The MPL is programmable.
- Low credit alarm, low credit alarm limit is programmable.
- When the customer card missed, the system will reissue the card for customer.
- Terminal cover open detection, meter cover open detection
- Relay open when power failure, relay close when power resume(optional)
- Measure voltage, current, power, angle, frequency of each phase
- LCD display with backlight
- Measure current of neutral line
- Measure maximum demand.
- Prevent tamper and event record.
- Optical communication, the protocol is IEC61107.
- GPRS communication (optional)
- RS485 communication(optional)
- Load profile function(optional)

## Technical specifications

### MT514-D

Item	Technical spec (refer to the parameters on the nameplate)
Rated voltage	3×220V/380V
Range of operation voltage	50%Un~ 120%Un
Rated current	3×5(100) A
Pulse constant	Active energy: 800imp/kWh; Reactive energy: 800imp/kvarh
Starting current	0.4% Ib
Accuracy class	Active energy: Class C; Reactive energy: 1.0
Reference frequency	50Hz or 60 HZ
Power consumption	≤2W, 6VA
Temperature	-25°C ~ +55°C
Temperature limit	-40°C ~ +70°C
Humidity	< 95%(Free of condensation)
Outline dimension	L×W×H=263mm×176mm×72mm
Weight	2.2kg
Protection class	IP54
Impulse withstand voltage	6kV
AC voltage	4kV
Electrical fast transient	4kV
Pulse parameters	Pulse width:(35±16)ms, Current≤10mA, Voltage: DC(5 ~ 24)V(External power source)

### ISKRAEMECO GROUP

Copyright © 2023 Iskraemeco. All rights reserved.  
www.iskraemeco.com