



Iskraemeco digital grid solution

- Grid monitoring
- Grid observability
- Grid flexibility
- Grid topology
- Digital twin

Improved third generation of IE.X smart meters

IE.X smart meters are designed to deliver better data quality, efficient data exchange, and processing. This advancement is crucial for reliable, near real-time grid monitoring.

The IE.X platform supports a wide range of communication technologies, including cellular networks (NB-IoT/LTE-M/2G, 2G/4G, with or without Last Gasp, eUICC, antenna coupler); Ethernet, fiber optic cable, power line communications (G3PLC); Local communication (M-Bus, wM-Bus, RS485, P1) and service communication via a fiber optic port. It is capable of supporting multiple communication protocols simultaneously.



These smart meters are functionally flexible, allowing for the interchange of communication modules during operation and the addition of new functionalities for grid monitoring. These features include secondary data capture, load profile activity schedules, access control, and power quality monitoring settings.

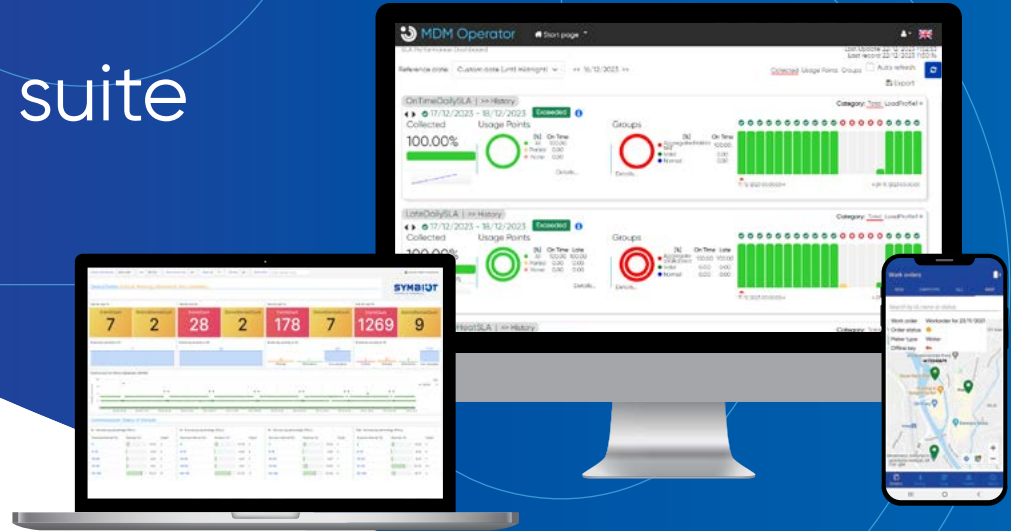
Technologically, the meters are enhanced by an IoT EDGE module, which extends their capabilities with additional applications and services.

SYMBIOT

POWERED BY ISKRAEMECO



Symbiot software suite



Symbiot surpasses the limitations of conventional meter management software, offering a comprehensive platform for the digitization of distribution grids. It simplifies data management, enhances data visibility, and improves network control with advanced security standards.

Performance: Symbiot ensures fast and seamless data processing with a wide range of configurations to meet your specific needs.

Interoperability: It provides easy connectivity with third-party devices, applications, and systems.

Flexibility: Symbiot adapts easily to new functionalities and allows for quick and straightforward upgrades.

Sustainable Investment: The platform is designed to meet future needs, providing a long-term return on investment.



Symbiot HES

Head-end system focusing on collecting data from multiple sources.



Symbiot MDM

Meter data management system and analytics software.



FieldAssist

Platform for organized and efficient field work.



Symbiot Water

Digital water management.



Symbiot Twinner

Digital twin of the electricity grid.



Symbiot Energy 360

Customer application.



Symbiot Elumia

Smart lightning management system sources.