



Innovating for **Life.**

# Innovating for **Life.**

[www.iskraemeco.com](http://www.iskraemeco.com)



We are  
Iskraemeco

01

# Iskraemeco at a glance

- Global company with local footprint
- Transforming data into actionable insights through digital platforms
- Offering end-to-end solutions for energy, water, and eMobility
- Technology design centers where bold ideas are turned into reality
- Sustainable innovation trendsetter
- Supporting digital and green transformation
- Partner of choice
- Committed to innovation by constantly refining our products and services



Sharing  
expertise

since **1945**



# A provider of choice

## IE Group

Slovenia, Egypt, Argentina,  
UAE, India, Portugal

## 80+ countries

global presence

**9** Production facilities &

**3** Technology Design Centres

**88%**

revenues from smart  
solutions

**220+ mio EUR**

revenue 2023

**1500 +**

employees worldwide



# Markets of influence



## Iskraemeco company

Argentina  
Austria  
Belgium  
Columbia  
Egypt  
Germany  
India  
Italy  
Malaysia  
Netherlands  
Poland  
Portugal  
Slovenia  
Sweden  
Switzerland  
United Arab Emirates  
United Kingdom



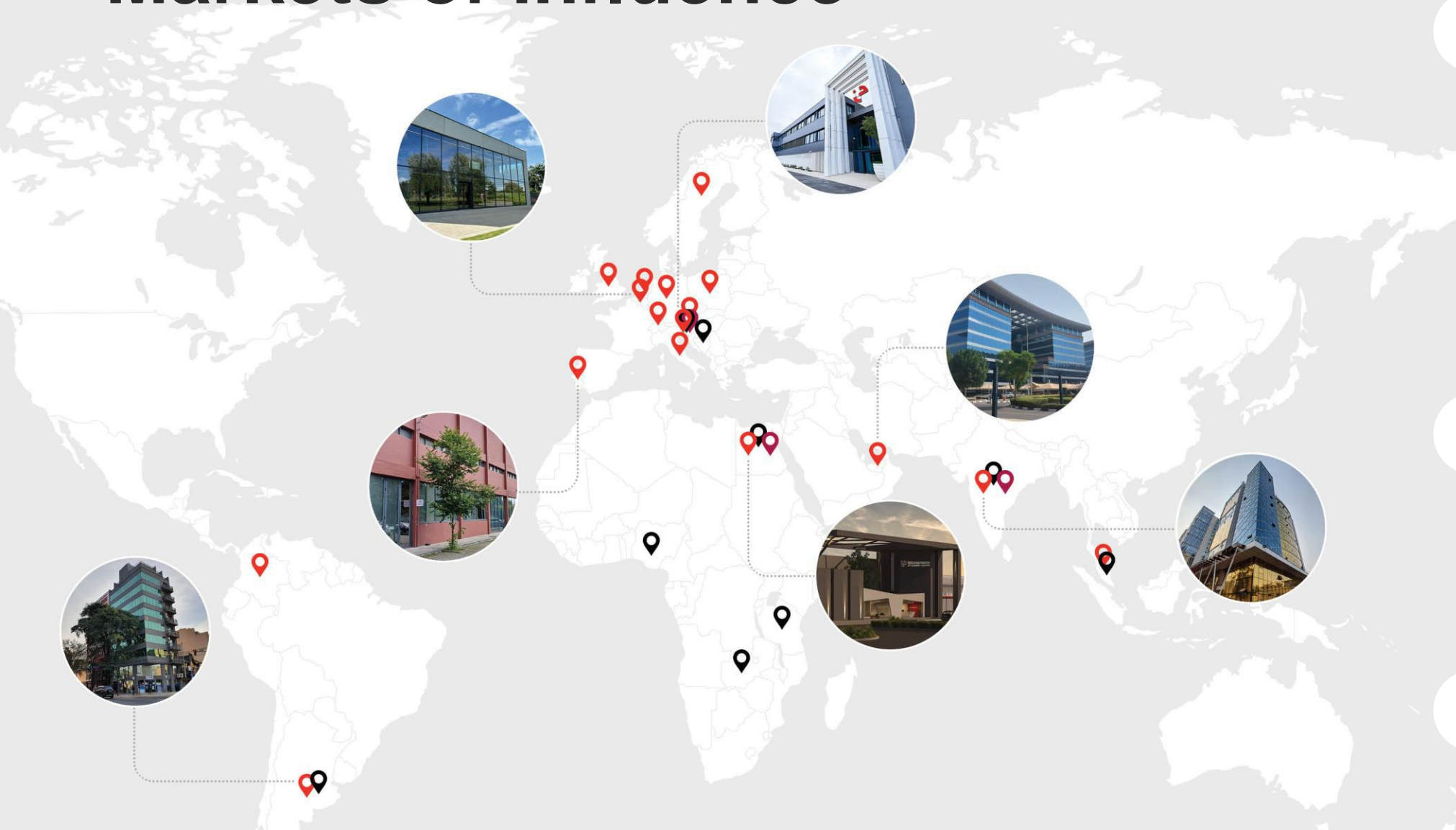
## Production facility

Argentina  
BiH  
Egypt  
India  
Malaysia  
Nigeria  
Slovenia  
Tanzanija  
Zambia



## Technology design centers

Egypt  
India  
Slovenia





# Vision

**To be one of the most advanced platform companies in solving energy, water and cities challenges while advancing sustainable living.**

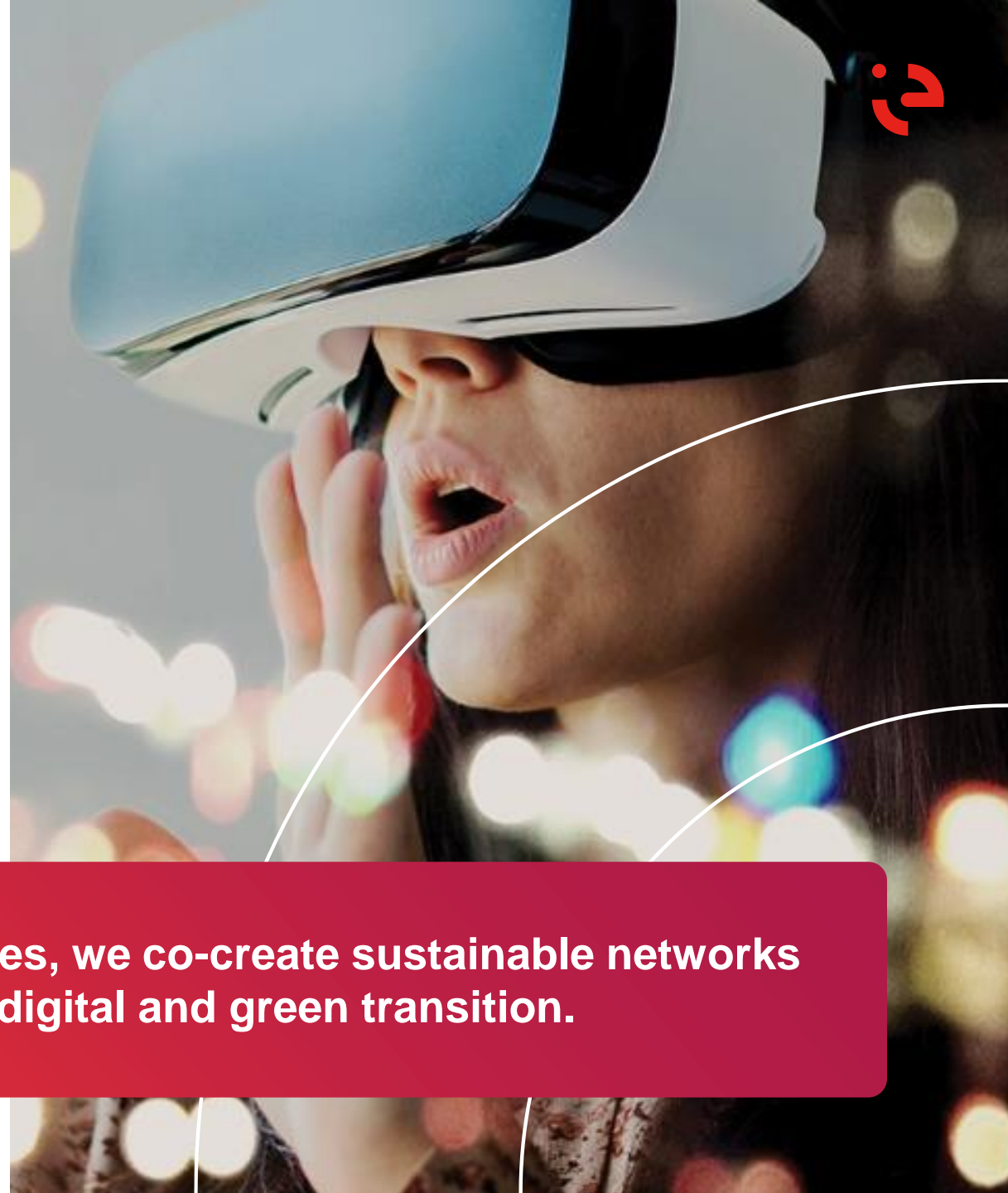
- Power of data
- Digital platform solutions
- Optimizing energy and water consumption
- Enablers of green and digital transformations
- Net-zero emissions



# Leading the digital transformation

- **Innovation** and cutting-edge technologies
- **Knowledge and expertise**
- Integration of **digital platforms** with focus on software solutions
- Data-driven **value creation**
- Collaboration for **green transition**
- **Consumer centric** approach

**Together with our partners, utilities and cities, we co-create sustainable networks that act as pivotal drivers of the digital and green transition.**





# Iskraemeco Universe



Energy solutions



Water solutions



Digital platforms



eMobility





# Global company with local expertise

- Bringing together people from **many cultures with different work experiences, different backgrounds and different perspectives**
- **We learn from, inspire and respect** each other
- We are creating environment that helps our **employees grow and develop**

We are embracing **diversity** and  
grow culture of **inclusivity**.





# Industry recognition

- **2019 FDI Award**
- **2020 Global Smart Meter Growth Excellence Leadership Award**, Frost & Sullivan
- **Golden innovation awards**, Chamber of Commerce
  - 2017 AM550 smart meter platform
  - 2018 AC750 Communication Platform
  - 2018 Sustainability concept
  - 2024 IE.X platform
- **Silver innovation awards**, Chamber of Commerce
  - 2021 IoT Modular Platform
  - 2023 Edge computing platform in a digitalized IoT environment
  - 2023 Robotic cell for testing smart meters
- **AAA Creditworthiness**
- **2022 Special prize for Innovation Challenge: Green Penguin Project**, Chamber of Commerce
- **2022 Ambassador of Slovenian Economy**, Spirit Slovenia
- **2023 Most Innovative Energy & Water Management Solutions Provider IE Middle East FZE**, UAE Business Award
- **2023 Silver EcoVadis**
- **2024 Most Innovative Energy & Water Management Solutions Provider**, Global Brands





# Part of a larger story

**85+**

Years of evolution

**5bn USD**

Revenue

**110**

Export markets

**31**

Production facilities

**48**

International offices

**19k**

Employees

The grid consists of several cells, each with an image and a text label:

- Digital Solutions**: Image of a city skyline at night with blue digital network lines overlaid. Includes the **iskraemeco** logo.
- Electrical Products**: Image of a hand holding a glowing lightbulb over a laptop.
- Wire & Cables & Accessories**: Image of several electrical cables with exposed copper strands.
- Infrastructure Investments**: Image of a hand placing a coin on a stack of coins with a small green plant growing from the top.
- Engineering & Construction**: Image of an industrial facility at night with tall chimneys and lights.

The **ELSEWEDY ELECTRIC** logo is prominently displayed in the upper right area of the grid.

# Sustainability

02



# We're devoted to Environmental, Social and Governance (ESG) principles

## Our approach:

- Sustainability as a strategic priority
- ESG decision-making incorporated at the highest level through the sustainability committee
- Recipient of various awards and certificates
- Members of UNGC, committed to SDGs
- Team of experts (HSE, environment and energy management)





# Sustainable business practices

## Our commitment:

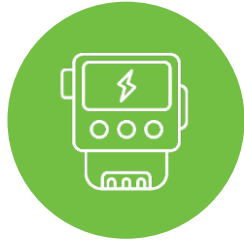
- Tackling climate change through decarbonization activities
- Facilitating energy management optimization through our products and solutions
- Responsible and ethical practices towards people and the environment throughout our value chain



**Accountable growth,  
responsible future**



# ESG principles in everything we do



**Climate conscious products and services supporting smart & sustainable cities**



**Reduced and renewable energy generation**  
(≈20% from own solar plant)



**Sustainable material consumption (incorporating circular economy principles)**



**Responsible and transparent supply chain**  
(ESG Supplier audits)



**Fair and inclusive social conduct**



**Long-term value creation through responsible business practices**

- -70% reduced CO2 footprint since 2013
- UN Global Compact member
- Continuous stakeholder engagement
- Top-management sustainability committee
- Environmental product declaration
- EcoVadis silver medal
- CSRD in 2026

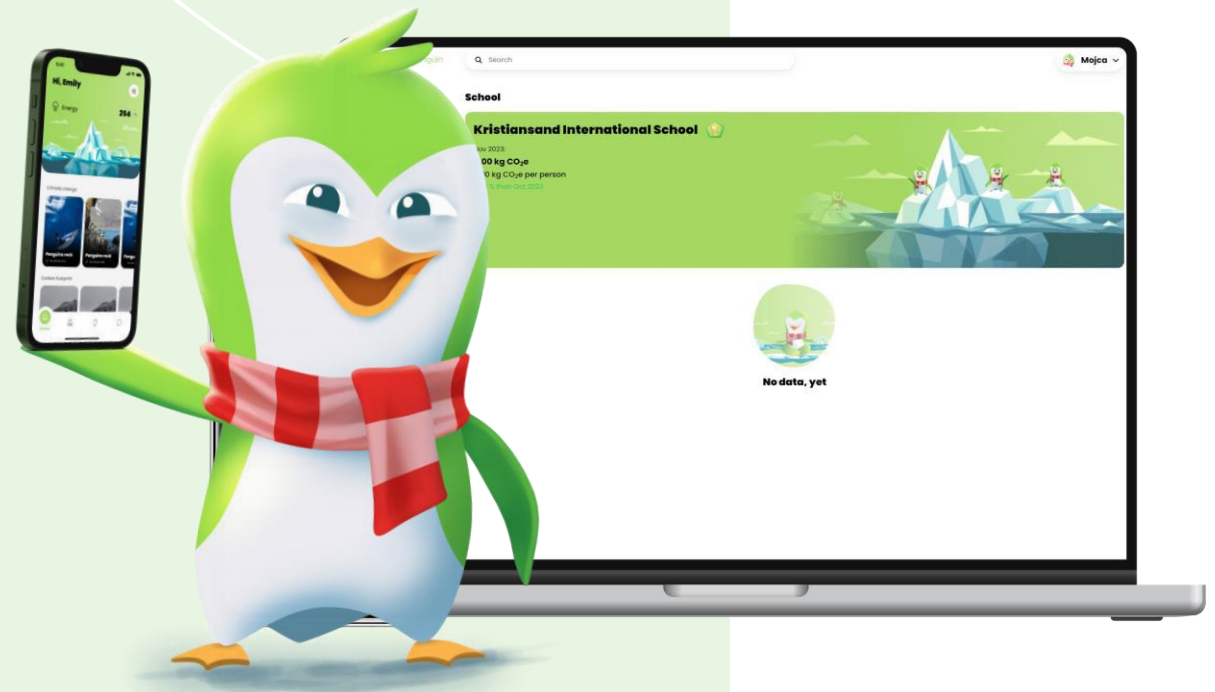
# Project Green Penguin

An innovative didactic digital tool for experiential learning and green transition literacy.



## Our goals:

- Encourage primary school teachers and pupils to implement environmental principles in their day-to-day lives in an interactive and fun way;
- Empower the young generations to pass this knowledge on.





# Iskraemeco

## Offering

### Solution and devices

03



Energy  
solutions



Water  
solutions

Digital  
platforms



eMobility



# Business streams



# Energy solutions





# Energy solutions

Digitalization, cutting-edge technologies, and new business models are reshaping the energy industry, presenting numerous opportunities.

**We are focused on providing advanced and innovative solutions for efficient energy management.**

**With a strong emphasis on sustainability and energy efficiency, we offer:**

- Smart metering solutions,
- Grid management/ Digital grid solutions,
- Elumia smart lighting monitoring solution,
- Prepayment solutions and
- Other innovative products and services to help our customers optimize their electricity consumption, reduce their carbon footprint, and empower their end users.

**METERS – COMMUNICATION – SOFTWARE – SERVICES**



## Digital grid

The solution harnesses smart meters with edge computing capabilities, a variety of communication protocols for data transfer, Symbiot platform for data management and Symbiot Twinner – a virtual model of the physical grid. The core operations focus on monitoring, control, and communication within the energy supply chain, aiming to enhance efficiency, reduce energy losses, optimize energy supply and generation, lower costs, and improve reliability.

**Grid  
monitoring**

**Grid  
observability**

**Grid  
topology**

**Digital  
twin**

**Grid  
flexibility**



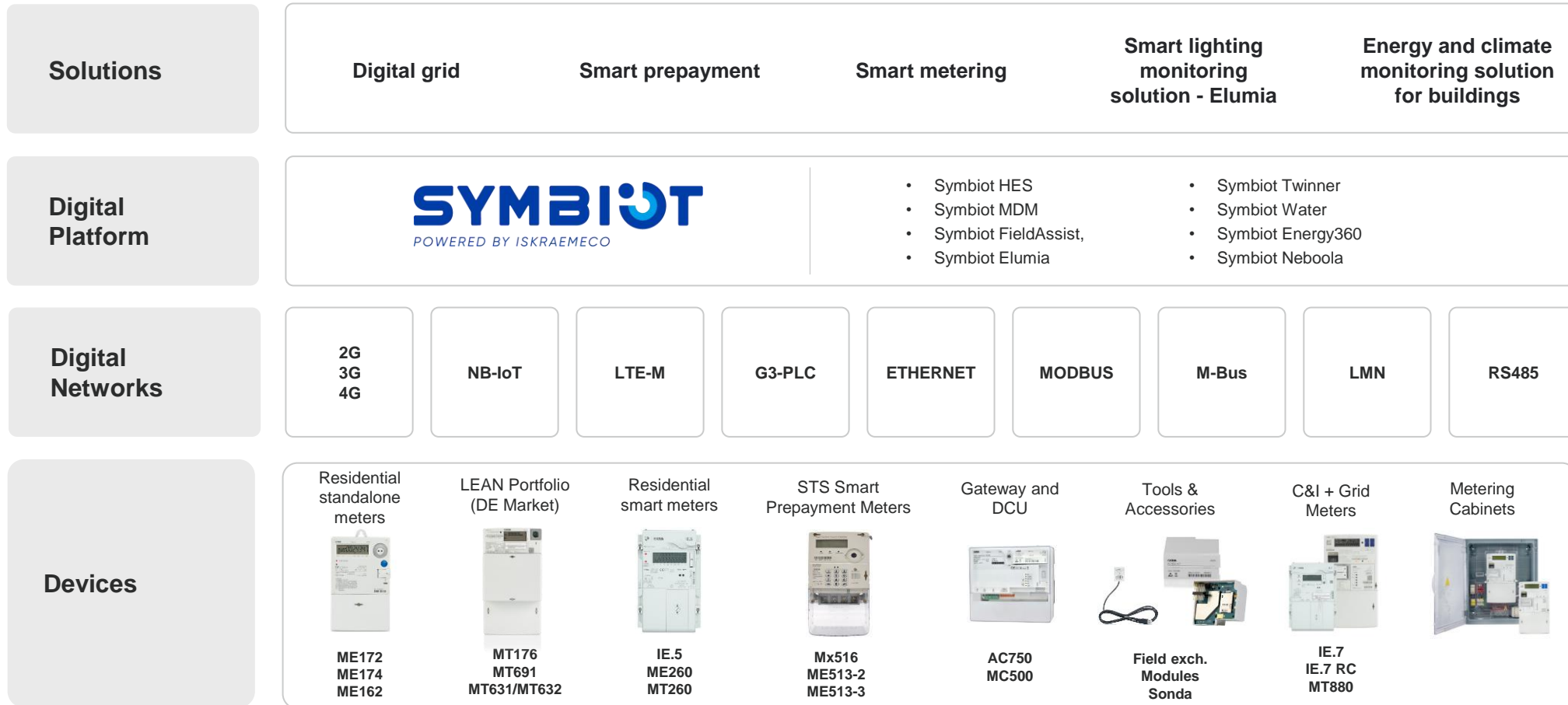
## Elumia - Smart lighting monitoring system

Our intelligent lighting monitoring system provides a cost-effective and reliable lighting monitoring solution for all types of public lighting. Based on a globally patented technology, the system can detect broken luminaries without requiring a sophisticated and expensive communication infrastructure, using power consumption profiles. Utilising a cloud-based management system, Elumia lighting controller, and standard LED lights, the solution provides by far the most reliable application with a TCO that far outperforms any other solutions currently available on the market.

## Energy and climate monitoring solution for building

Iskraemeco's Energy and climate monitoring solution enhances energy management and building infrastructure maintenance by providing detailed insights into indoor and outdoor environmental conditions. By monitoring energy, temperature, humidity, pressure, and dewpoint data, our solution provides you with the critical insights needed to make well-informed decisions, thereby optimizing your resource use. It helps in maintaining optimal environmental conditions and plays a crucial role in protecting buildings and their interiors from climate-related damage.

# Energy solutions ecosystem





# Powering tomorrow with quality devices and data excellence



Electricity  
portfolio







# Water solutions





# Water solutions

Water scarcity and management challenges are pressing issues globally, and Iskraemeco is dedicated to addressing them with innovative solutions.

**The Smart Water business stream focuses on leveraging cutting-edge technologies and data-driven approaches to enable efficient, sustainable, and environmentally water management practices.**

**We offer:**

- Smart water metering solutions,
- Leak detection systems,
- Operational efficiency monitoring,
- Revenue protection, and
- Other technologies to enable efficient water management, conservation, and sustainability for cities, municipalities, and industries around the world.

**METERS – COMMUNICATION – SOFTWARE – SERVICES**



## Revenue protection

The market for meter reading and customer service is evolving toward smart meters. The ability to remotely read meters increases consumer transparency and enables ongoing monitoring of utility revenues.

We offer the following solutions:

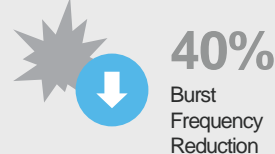
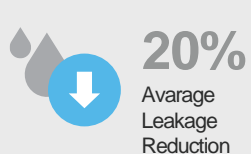
- **Meter data asset management**
- **Key customer monitoring**
- **Billing/Commercial system**
- **Meter data collection**
- **Customer portal**
- **Prepayment solution**

## Operational efficiency

Utilities are constantly seeking ways to optimize all aspects of their operations, ranging from the treatment process to network management to customer interaction.

Our solutions in this area include:

- **Smart pumping optimization**
- **Operational visibility**
- **Asset management solution (GIS solution)**
- **Digital leak management**





# Variety of water meters, using different measuring and communication technologies

Water product portfolio





# Digital water solutions ecosystem

## Solutions



Asset management solution (GIS solution)



Operational visibility



Smart Pumping Optimization



Digital leak management



Prepayment Solution



Meter Data Asset Management



Billing/Commercial System



Customer portal



Meter Data Collection



Key customer Monitoring

## Digital Platform



- Symbiot HES
- Symbiot FieldAssist
- Symbiot Neboola
- Symbiot Network management center
- Symbiot Analytics
- Symbiot Customer Portal and application

## Digital Networks

**HOLOSYS**  
POWERED BY ILLUMINCO



HydroPulsar



PulseReader WP1



NB-IoT PulseReader



NB-IoT Bridge



HoloSphere



## End Points

### Revenue Protection

- Consumption
- Valve (Prepayment application)

### Operation Efficiency

- Flow
- Energy
- Pressure
- Pump
- Valve
- Water Quality



Residential ultrasonic water meter



Residential mechanical water meter



Residential prepayment water meter



Bulk ultrasonic water meter



Electromagnetic water meter



Ecosystem Partnership Program

Services





# Digital platforms





# Digital platforms

As data becomes the driving force of the modern world, our company is at the forefront of data management innovation.

**We develop digital platforms that “transform data into knowledge”, empowering our customers to make data-driven decisions to enhance efficiency, performance, and sustainability across various industries.**

By seamlessly collecting, processing, and analyzing data using interconnected applications, our customers gain valuable insights into the rapidly evolving state of the electricity grid, allowing them to make informed decisions.

## **We offer:**

- Symbiot software suite with a modular applications packages
- Digital twin of the electricity grid
- eIoT Edge Compute module



# Symbiot

Data streams are meaningless without powerful tools to manage and analyze them. We leveraged our expertise to develop specialized applications within the Symbiot software suite that help maximize the value of data. Combined with hardware for water, gas, electricity, and heat, as well as integration with upper layers, Symbiot offers unique solutions for distinct areas of utility services. It is a flexible platform that enables simple, highly secure, and automated management of energy and water businesses.



**SYMBIOT**HES



**SYMBIOT**Water



**SYMBIOT**Energy 360



**SYMBIOT**MDM



**SYMBIOT**Elumia



**SYMBIOT**Neboola



**SYMBIOT**FieldAssist



**SYMBIOT**Twinner





# Symbiot software suite

Symbiot makes it easy to build and manage smart utility environments in any domain, from simple smart home connections to complex electricity grids.

END-to-END SOLUTION – MULTY UTILITY – FLEXIBLE – INTEROPERABLE – MODULAR – COST EFFECTIVE - SECURE

**Digital  
grid**

**Energy  
IoT**

**Smart  
water**

**Smart  
Prepayment**

**e-Mobility**

**Smart  
city**

**Smart  
lighting**

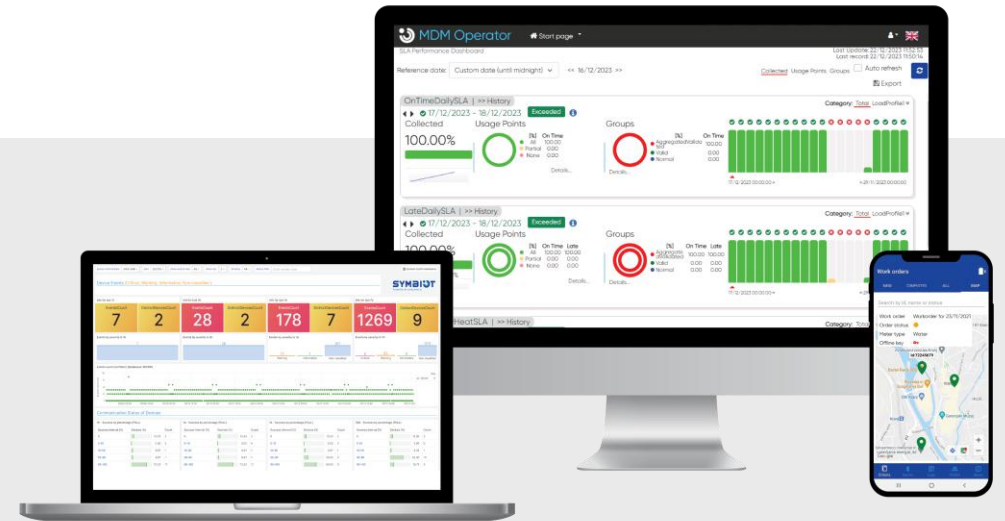
**With Symbiot, we make smart utility management a reality.**



# A comprehensive software suite for seamless operations

Software platform

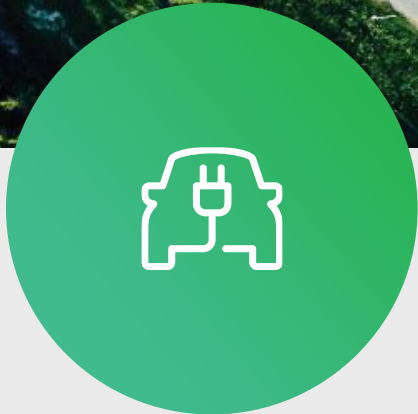
**SYMBIOT**  
POWERED BY ISKRAEMECO





eMobility





# eMobility

As the world transitions towards clean transportation, we are offering cutting-edge charging solutions for electric vehicles (EVs) while ensuring grid stability.

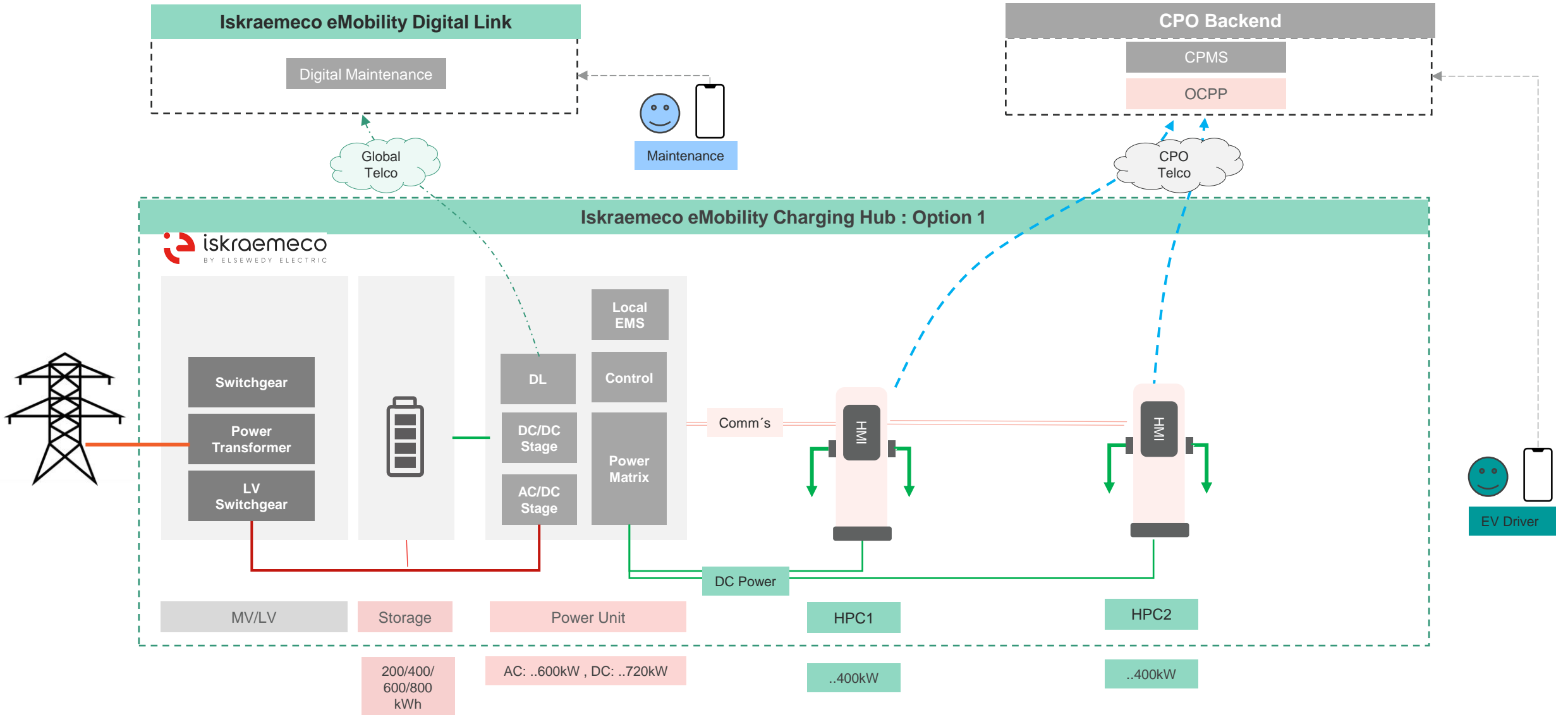
**We offer a wide range of EV charging stations, management systems, and related services to support the growing demand for e-mobility solutions.**

Strength points of Iskraemeco EV Chargers are their reliability, power efficiency, enhanced uptime, and low noise levels ensures optimal charging performance. They are designed to work with the minimum on-site maintenance, minimizing downtime and maximizing power efficiency. Additionally, their robust construction and high-quality components contribute to extended uptime, ensuring uninterrupted charging services. The low-noise design ensures a quiet and pleasant charging experience for users, minimizing disturbances in residential and commercial areas

**We offer:**

- AC charging stations
- DC fast charging stations
- DC high power stations (all in one and distributed systems)

# Technology landscape



# Empower your electric future



**GlowBox**

22kW

**PublicBox**

2x22kW

**UrbanBox**

30-40kW

**NeoBox**

90-180kW

**HPC**

Distributed System

AC

DC

## Hardware

- AC chargers (home and public)
- DC fast chargers
- DC high power chargers

## Software

- Seamless integration with different CPO systems
- DataLink - predictive maintenance platform

## Services

- After-Sales services
- Predictive maintenance
- Installation



**Simplicity  
empowered by  
intelligence, strength,  
and reliability.**

Portfolio of  
EV chargers



# Services

04





# Broad service portfolio

## Managed services

- Basic (SaaS) and advanced business modules of managed services
- Software hosting on private, public or hybrid clouds

### Minimize risks

(costs, technology, human resources)

### Efficient processes

(economies of scale, shared IT infrastructure)

### Costs optimisation and investment protection

(pay as you need, evolving operation environment)

**Latest competences, technologies and tools available**

## Planning

- Analysis of customer current infrastructure
- Customer involvement
- Proposal of optimal solution

### Infrastructure survey

**Feasibility study**  
(remote/on-site)

**Solution design**

**Consultancy**

## Deployment

- End-to-end solution → from installation to final testing
- Managed by our professional delivery managers and team of experts → no delays, risk management

### Documentation

**Installation**  
(remote/on-site)

**Configuration**  
(remote/on-site)

**Integration**

**Testing**  
(remote/on-site)

**Project management**

## Support services

- Detect errors on time → avoid costly interventions
- Maximize performance of the system
- Minimize system downtime
- Avoid impact on operation

**Preventive maintenance**  
(remote/on-site)

**Updates**  
(remote/on-site)

**Upgrades**  
(remote/on-site)

**Corrective maintenance**  
(remote/on-site)

**Service desk**

**Field service**

**Repair**

## Training

- Competence building: from beginner to master
- Tailored training approach
- Train the trainer
- Certification

### Professional

**Specialist**

**Expert**

# Technology design center



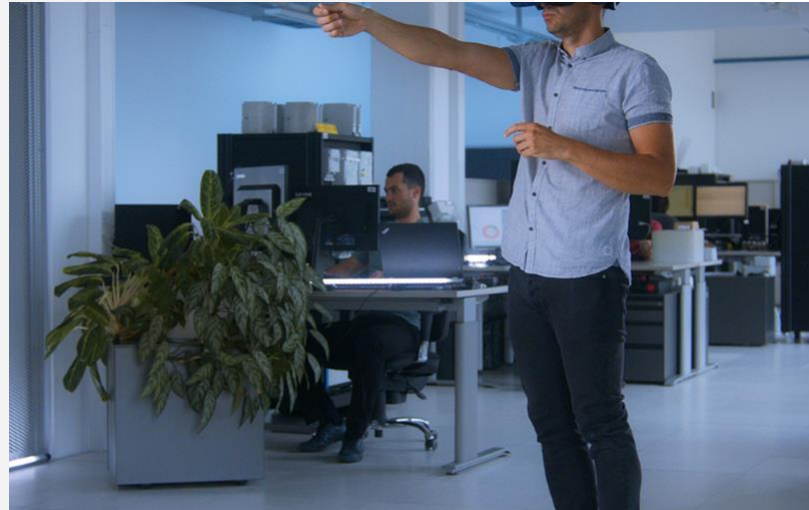
05

# TDC competency blocks & location





# Design in focus



## Technology design center

- Strategic technology management
- Design & develop
- Validation
- Customer acceptance



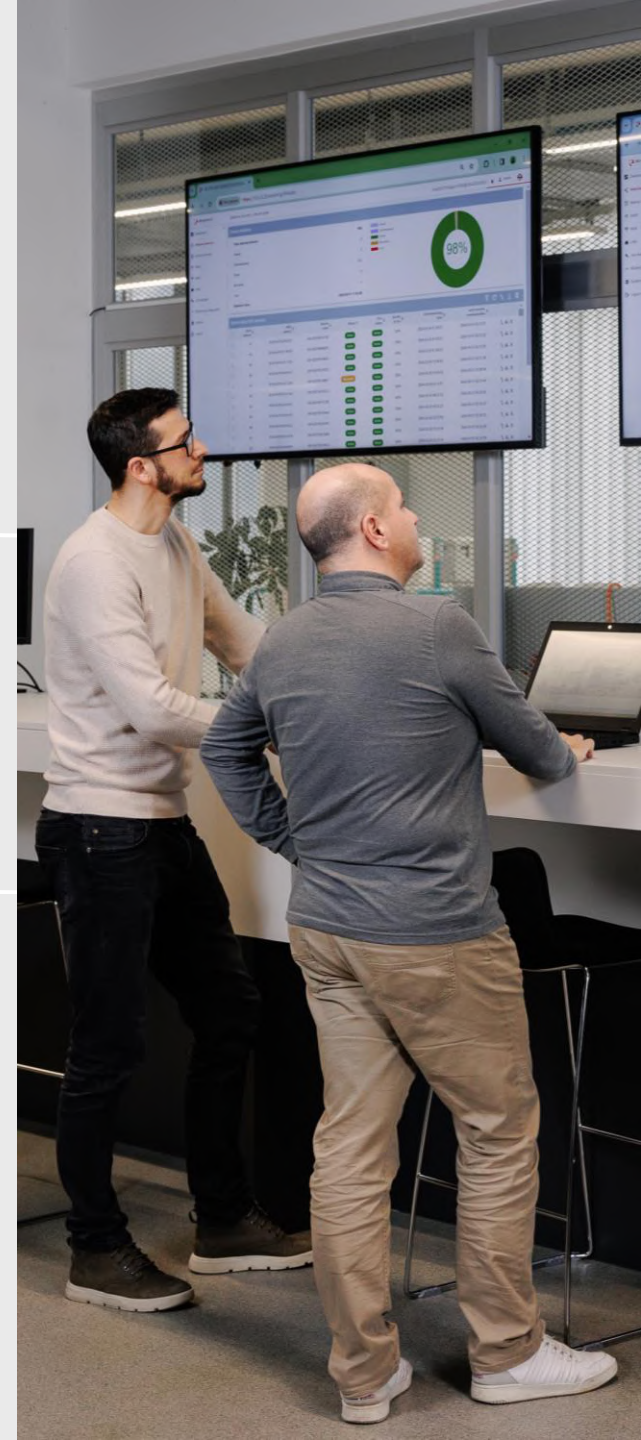
## Design house

- Innovation & technology
- DFM & Industrialization
- Use cases in real life
- Security
- Sustainability

# Validation as a backbone of the quality

## VALIDATION CENTER

- Knowledge hub
- Real life use cases
- Functional and performance products **validation**
- **SW testing**
- Technology testing
- Measuring laboratory
  - Metrology accuracy testing, Mechanical, Climatic, Safety, EMC testing ... and more
- **Reliability & accelerated lifetime tests**



# Group Operations

Delivery confidence



06



**100.000 sqm  
of production  
facilities**

Slovenia-Egypt-India-Argentina-  
Malaysia-Zambia-Nigeria-  
Tanzania-BIH



# Manufacturing strengths

- **In-house production** of PCBA and final assembly of products
- **Our own prototyping and development** of production equipment, assembly processes and testing SW
- **High level of knowledge** and long-term experience of PCBA assembly, final products assembly and process improvements
- Consistent **quality** of all manufacturing locations worldwide
- Quick and reliable **customer support**
- **Continuous production improvements** to meet customer's demands
- Inhouse **manufacturing engineering department**



## On-site manufacturing capabilities:

- **Electricity meters** and communication products
- **Water meters** and communication products (Holosys)
- **EV charging stations**



# Technology edge

Road to industry 4.0

**End-to-end  
production  
process  
traceability**

**Structural  
approach** to  
process  
automation  
solutions

Highly  
**automated  
assembly  
process**

**Robotization**  
of assembly  
processes

**Digitalization**  
of information  
processes



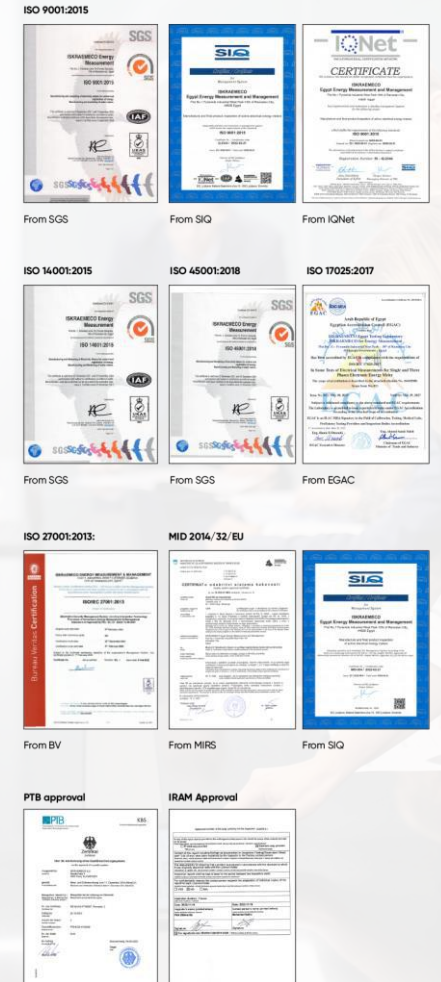
**Flexible. Faster. Customer-oriented.**



# Business excellence

- **IE Quality** standards in Operation are based on good practices of all global IE factories.
- Support an exchange platform for sharing best practices between global IE factories – 6 Sigma and KAIZEN approach.
- Unite **quality measurement system** implemented for global IE factories.
- **Lean Quality control system** implemented to deliver the highest quality products.
- Continuous audits of suppliers and production.

**Automation**  
**Robotization**  
**Digitalization**





# Thank you

[www.iskraemeco.com](http://www.iskraemeco.com)

