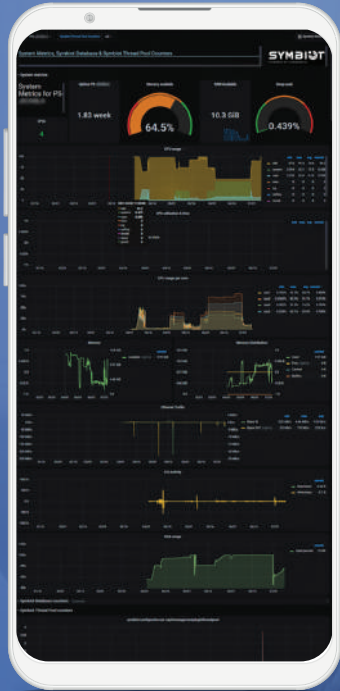


SYMBIOT

POWERED BY ISKRAEMECO

Future Intelligence For Today's Business

Benefits.



SYMBIOT

POWERED BY ISKRAEMECO

SYMBIOT is an adaptive, intelligent software platform that enables simple, highly secure and automated management of any business, based on real-time data processing.



+ **Configure your package and minimize costs**

The modular design of SYMBIOT allows you to customize your system by using only the modules you really need, minimizing system costs. A flexible licensing model supports you with your requirements.

+ **A solution supporting your growth**

The reliable and fully scalable platform provides you with a solution that not only meets your current needs, but also the requirements that may arise in the future due to system expansions, changes in legislation and/or operational requirements.

+ **Optimize processes with a flexible approach**

SYMBIOT is an extremely flexible solution that fully supports the optimization of your processes throughout the entire company with its service-based design.

+ **Ideal integration that delivers savings**

Using open standards and technologies ensures effortless integration with existing legacy systems and minimizes your custom development costs.

+ **Take your customer support to the next level**

The system instantly notifies you of any exceptional condition on the grid, so you can dispatch maintenance personnel within seconds of a power outage. Consumer-focused solutions increase customer engagement in energy-saving activities.

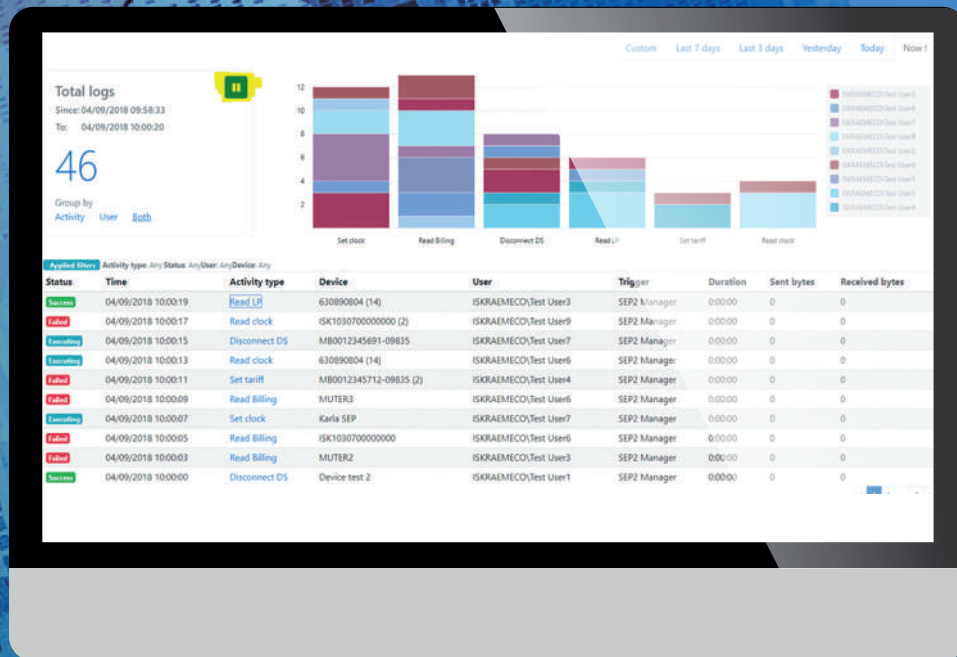
+ **Provide end-to-end security using the most advanced methods available**

Sophisticated authentication and encryption methods are essential for secure data transmission between the e-meter and the Head-End-System. End-to-end security is provided through the use of advanced, standards-based security methods.

Advantages.

- + Generic platform for electricity, water, heat and gas
- + Seamless integration with third party devices through a powerful SDK
- + Optimizes resource utilization with automatic load balancing
- + Easy device group management with minimal effort for group handling (one definition applied to a group of devices for reading, reconfiguring, reporting, etc.)
- + Supports on premise HW, virtualized HW, cloud deployment or SaaS and DaaS modes of operation

...and numerous others.



Find out more at
www.symbiot.iskraemeco.com

Packages.

SYMBIOT HES

Focused on multi-source data collection, meter-agnostic approach with the ability to process any competitive device (electricity, water, gas, heat).

SYMBIOT MDM

Provides functionality to analyze data from multiple sources (multiple HES systems) and prepares it for other upper systems (ERP, billing, customer portal). Provides validation, aggregation, estimation and prediction at the point of consumption level.

SYMBIOT FieldAssist

Solution to simplify filing work and give field workers a clear overview of the tasks they need to complete each day. Provides the ability to configure filing work and create work orders, enables drive-by and walk-by solutions for battery-powered meter data collection.



Iskraemeco Group

symbiot@iskraemeco.com
www.symbiot.iskraemeco.com
www.iskraemeco.com



Copyright © 2022 Iskraemeco. All rights reserved